



Ready, Set, Here We Go!

Managing COVID-19
in the 2022-2023 School Year

CDC School Guidance*

Districts should

- develop a set of infectious disease prevention strategies as part of their normal operations and
- add and layer COVID-19-specific prevention strategies in response to COVID-19 Community Levels and local conditions.

*To date the state and local school guidance has not been released. It is anticipated that it will coincide with the CDC guidance.



Infection Disease Prevention: Day to Day Operations

Stay Home When Sick

Provide Information on
Vaccinations

Ensure Regular Cleaning
and Proper Ventilation

Reinforce Proper Hand
Washing Procedures



Stay Home When Sick

CDC Guidance:

- Staff and students should stay home when sick.
- Student families should follow absence reporting procedures, found in the Student Code of Conduct and on schools websites.
- Those with symptoms of COVID-19 should follow CDC recommendations:
 - Stay home;
 - Have a PCR test ASAP.





Vaccination

CDC Guidance:

- Full vaccination and staying up to date on COVID-19 vaccines is highly recommended by the CDC.
- Weekly testing for unvaccinated district staff is no longer required.
- Vaccination status is no longer considered with regard to quarantine.
- The district will continue to advertise and coordinate facility usage for testing and vaccination opportunities.





Cleaning and Ventilation

Per CDC Guidance:

- Cleaning protocols can be found in the updated *District Cleaning Protocol* posted on the website.
- Cleaning and Personal Protective Equipment supply levels are adequate.
- The district will continue to optimize ventilation to improve indoor air quality.
- The district will continue to follow the recommendations of the district HVAC field study completed in 20/21 school year.





Re-enforce Hand Washing and Other Procedures

CDC Guidance:

- Proper hand washing procedures will be reinforced.
- Students will be reminded to wash hands especially at key times, for example: before and after eating; after using the restroom; and after recess.
- Hand washing supplies are adequate.
- Procedures for properly covering coughs and sneezes will be reinforced.
- Visual aids and the Positive Behavior In Schools platform will be utilized to further reinforce proper hygiene.





Add and Layer COVID Prevention Strategies

Physical Distancing

Face Coverings

COVID-19 Testing

Communication Around
COVID/Contact Tracing



Implementing Layered Strategies

Circumstances such as a rise in the COVID Community Level or an increase in reported positive COVID-19 cases locally, district-wide, or in particular school building may result in the implementation of one or more layered strategies.

The implementation of one or more layered strategies will be made in consideration of CDC and/or state or local health guidance and, in certain circumstances such as an outbreak, in conjunction with the local health department.

The district will notify the applicable school community of the implementation of any COVID prevention strategy as soon as possible.





Physical Distancing

General precautions to help prevent the spread of viruses will be used. There will be no mandatory distance used.

Classroom setup: forward looking rows of seats are not longer required.

Physical Education: locker use will resume - classes will be held outside when feasible.

Meals

- No universal free meals - student families should complete meal application or fund child's meal account.
- Breakfast in the classroom will be held in all schools except FHS, where it will be served in the cafeteria.
- Lunches may be served outside when feasible.
- Classroom celebrations will not include food.

Athletics will continue and extracurricular activities will be held in person.

Bus capacity will operate pre-pandemic. Families can still waive transportation.

Layered Strategy if Needed:

- allocate more space, where available, for meals;
- reconfigure classroom set up to provide additional space;
- reschedule or cancel athletic season, FVPA event or other "high risk activity"*

*High risk activity - where increased and forceful exhalation occurs during physical activity.



Face Covering

Face Coverings Will Be Optional for All Staff, Students and Visitors

Exceptions:

- Staff or students returning from *isolation* must wear a well fitting mask at school, school sponsored events and on a school bus through day 10.
- Staff/students in the *isolation room* or *in the nurse's office, if there is a sick individual present*, must wear a well fitting mask.
- CDC recommendation - staff or students *exposed* to a person who has tested positive for COVID-19 should wear a face covering at school, school sponsored events and on a school bus.
 - Staff/student families will be informed of these recommendations in a general exposure notification letter.

Anyone who *chooses to wear* a mask should do so freely with no adverse consequences.

Layered Strategy if Needed:

- return to universal mandatory masking*, district-wide or in a more school specific manner

*The same exceptions to universal mandatory masking as last year, i.e. children under two, will apply this year.



COVID-19 Testing

Diagnostic Testing

The CDC has recommended that families of symptomatic students have their child tested* as soon as possible.

- A negative PCR test will allow the student to return to school when their symptoms resolve.
- A positive PCR test
 - will require that the student isolate for five days;
 - will enable the student to “listen in” to their classes via links provided.

Screening Testing

Per Executive Order, unvaccinated “covered employees” are no longer required to test for COVID-19 weekly. The district will continue to advertise and coordinate facility usage for testing and vaccination opportunities.*

Layered Strategy if Needed:

- screening testing for cohorts, for example, students and staff in “high risk activities”** may be implemented.

*Families may wish to avail themselves of the Zufall School Based Health Center for COVID-19 Testing and should call 908-526-9040.

**High risk activity - where increased and forceful exhalation occurs during physical activity.



Communication Around COVID-19

Contact Tracing

Contact tracing will not be utilized.

When a positive case of COVID-19 is reported in a staff member or student in the district:

- The school nurse will be notified and the staff member/student will be made to isolate per CDC recommendations.
- The lead nurse/assistant lead nurse will report the case to the appropriate health organizations.
- A general exposure notification letter will be sent to *those who may have been exposed to the positive person, i.e. the class; grade level or members of an extracurricular activity.*
- A chart of reported positive cases will be updated once a week, if necessary, and posted on school and district websites.

Should an Outbreak Occur:

- the local department of health will contact the district and new department of health protocols, which may include contact tracing, will then be put in effect;
- as applicable, the school/district community will be notified of any new health protocols, as soon as possible.



Response to

COVID Symptoms

Reported Positive Case



Response to Symptoms in School - Isolation Protocol

A symptomatic staff member will report to the school nurse and will be sent home.

A symptomatic student will be brought to the nurse, supervised in the isolation room and picked up.

If the person's symptoms match COVID-19, the staff/student family will be told that the CDC recommendation is to have a PCR test as soon as possible.

If the person is tested and the test is negative, the individual can return to the building when symptoms subside.

If the person is tested and the test is positive, the individual must remain at home in isolation for *five* days.

- Students will be given links to "listen in" on their classes.
- A general exposure letter will be sent alerting those *who might have been exposed* to the positive person that the CDC recommendation for them is to:
 - watch for symptoms;
 - get tested if symptomatic or, on or after day five;
 - wear a mask for the next 10 days.

Individuals who have tested positive may return to school on day six wearing a well fitting mask and observing other precautions** through day 10.

*Those who might have been exposed are not excluded from school.

**Other precautions may include exclusion from activities where wearing a mask is not feasible.



Response to Symptoms Outside of School and Notification of a Positive Case

If a staff member or student tests positive for COVID-19 and the positive case is reported to the nurse.

The individual who tested positive will be advised to remain at home in isolation for *five* days; students will be given links to “listen in” on their classes. The appropriate health agencies will be notified and the district chart will be updated.

Those positive individuals may return to school on day six wearing a well fitting mask and observing other precautions* through day 10.

+++++

When a staff member or student, with symptoms at home, is reported to the school nurse, the symptomatic individual will be advised to stay home.

If the person’s symptoms match COVID-19, the staff/student family is told that the CDC recommendation is to have a PCR test as soon as possible.

If the person is tested and the test is negative, the individual returns to the building when symptoms subside.

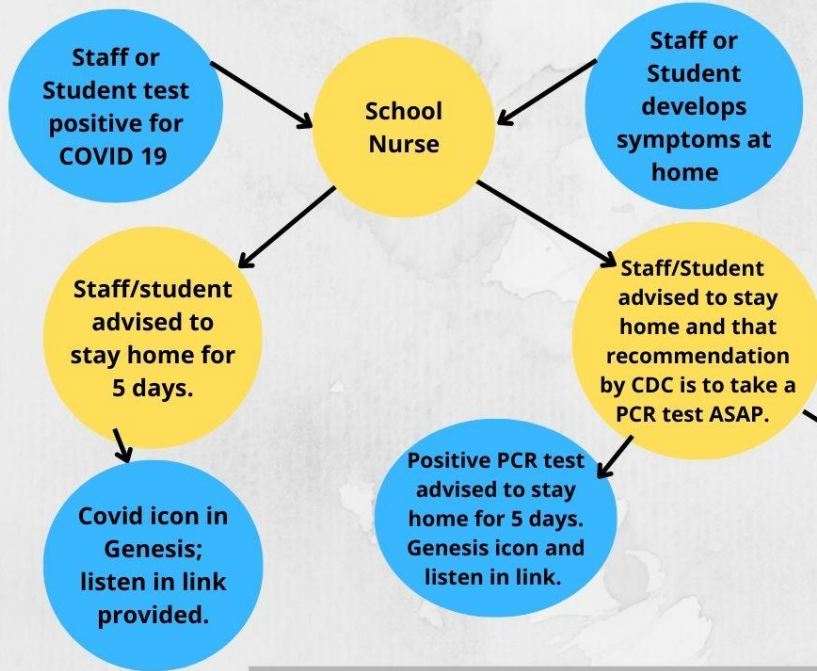
If the person is tested and the test is positive, the individual must remain at home in isolation for *five* days and students will be given links to “listen in” on their classes. The appropriate health agencies will be notified and the district chart will be updated.

Positive individuals may return to school on day six wearing a well fitting mask and observing other precautions* through day 10.

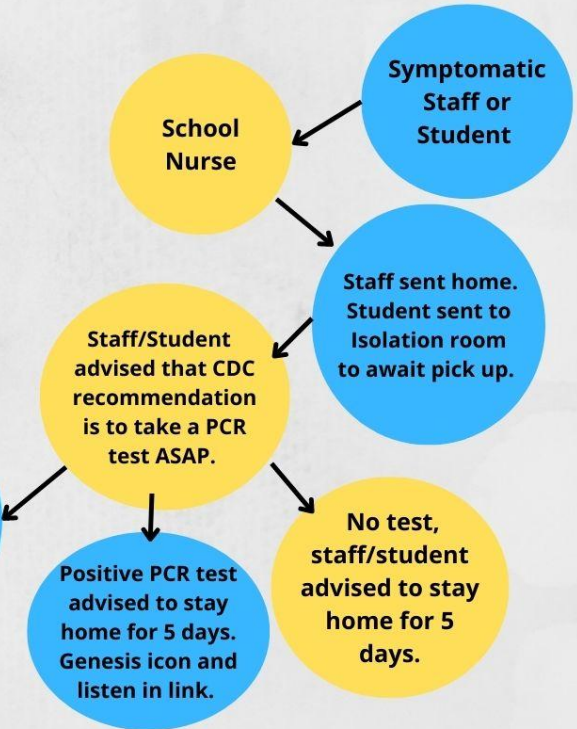
*Other precautions may include exclusion from activities where wearing a mask is not feasible.

Isolation Protocol

INFORMATION REPORTED FROM HOME



SYMPTOMS NOTED AT SCHOOL



Those ending isolation return to school and on days 6-10 must wear a well fitting mask and follow other restrictions which flow from the inability to wear a mask, i.e, do not participate in athletics or extracurricular activities where a mask cannot be worn.



Communication with the School Community

Implementing Layered Strategies

General Exposure Notification
Letter

COVID-19 Information Page



Implementing Layered Strategies and General Notification Letter

The district will reach out to staff and student families in the following ways:

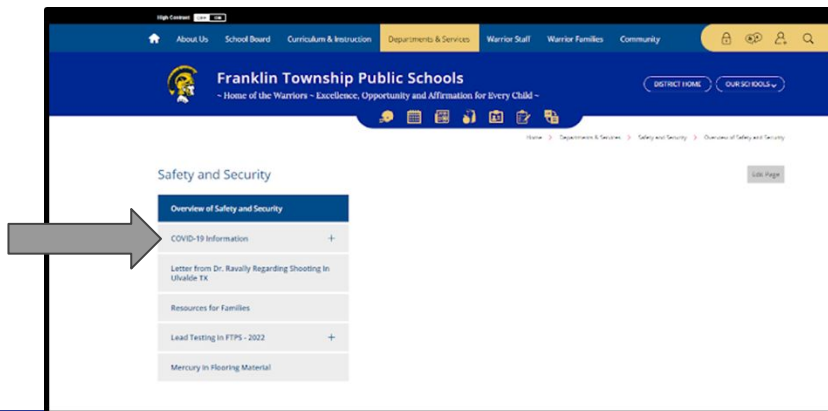
- If additional safety protocols are deemed necessary, the applicable school or district wide community will be notified as soon as possible.
- When a student/staff member who has presented symptoms of COVID-19 is reported positive for COVID-19 a general exposure notification letter will be sent to those who may have been exposed to that individual. This letter will contain information on current health recommendations for those who may have been exposed to COVID-19.



Chart of Positive Cases and Resources

Be sure to check out our the COVID-19 page located in the Safety and Security Department Page of our website for:

Links to Current Guidance;
Testing and Vaccination Resources;
the Chart of Positive Reported District Cases.





Welcome Back!

School begins
Wednesday,
September 7, 2022
for students in
Grades K-12